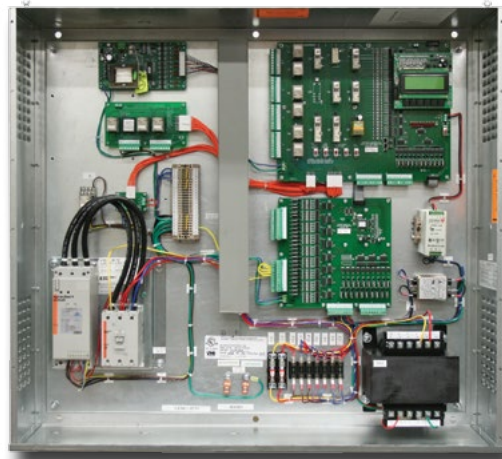


Hydraulic Controls

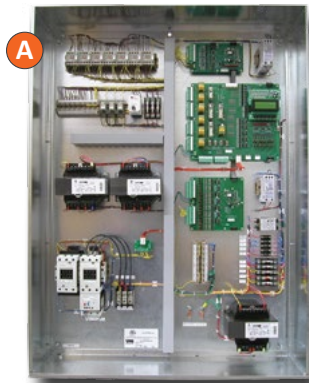
VHC-102

Hydraulic Passenger Controller

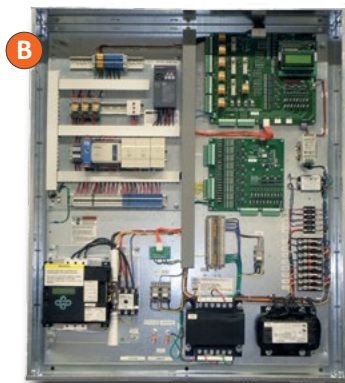
- ◆ Non-Proprietary
- ◆ Field Programmable
- ◆ On-Board Diagnostics
- ◆ Serial Communication
- ◆ Expedited Delivery!
- ◆ 5 Year Extended Warranty
(includes all boards, power supply, transformer, and solid state starter)



Online Quote Request



VMI / Peelle



VMI / EMS

VHC-102 (Integrated)

Hydraulic Freight Controller

- ◆ VMI/Peelle **A**
- ◆ VMI/EMS **B**
- ◆ Integrated Panel Reduces Field Labor by 8-12 hours
- ◆ Single Disconnect Required - Reduces Building Costs and Increases Safety

VHC-102

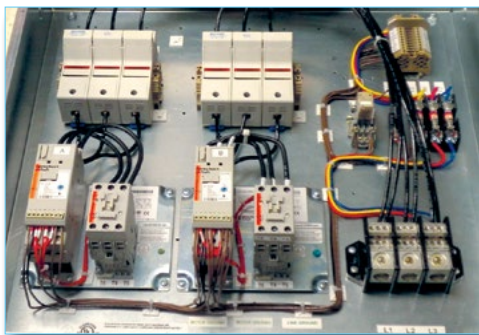
Hydraulic Freight Controller interfaces to the following freight doors.

- ◆ Peelle & Peelle Wireless
- ◆ EMS
- ◆ Courion

Solid State Starters

Single or Multi-Motor Starter Panels

- ◆ UL Label
- ◆ Branch Fusing on multi-motor units
- ◆ Fused for 120 Volt Supply
- ◆ Nema 1 or 4 enclosure



multi-motor panel shown above

Stand Alone Starters

- ◆ Sprecher+Schuh PCEC
- ◆ Siemens Class 72
- ◆ Competitive Pricing
- ◆ Interface Drawing Included



Starter Savings Video

